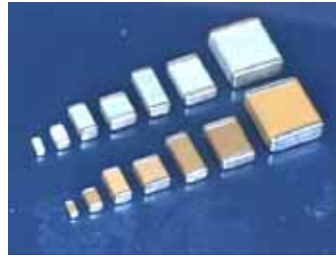


# HVC Series

## [ High Voltage Capacitor ]



**Holy Stone** high voltage products are designed and manufactured to meet the general requirements of international standards.

The product offering is well suited for commercial and industrial applications and includes C0G (NPO) and X7R characteristics in 0805 to 2220 sizes with working voltages up to 6KV.

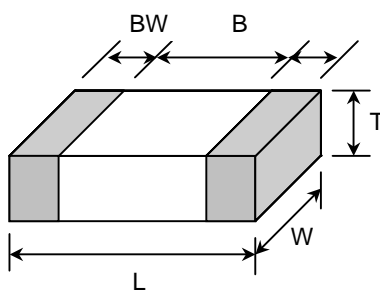
### ◆ Features

- ❑ Special internal electrode design offer the highest voltage ratings
- ❑ Surface mount suited for Wave and Reflow Soldering
- ❑ High reliability
- ❑ Suitable for LAN/WLAN interface, Back-Lighting Inverter ,DC-DC Converters, Ballast, Modems & Power Supply...etc.

### ◆ Summary of Specification

Operation Temperature	-55~+125
Rated Voltage	200Vdc to 6KVdc
Temperature Coefficient	NPO : $\leq \pm 30\text{ppm/}$ , -55~+125 (EIA Class )
	X7R : $\leq \pm 15\%$ , -55~+125 (EIA Class )
Capacitance Range	NPO :2pF to 10nF ; X7R :150pF to 470nF
Quality and Dissipation Factor :	NPO : Q 1000(D.F. 0.001); X7R : D.F. 2.5%
Insulation Resistance	100G or 500/C whichever is smaller
Aging	NPO:0% ; X7R: 2.5 % per decade hr, typical
Dielectric Strength	200V $V < 500V$ : 200% Rated Voltage
	500V $V < 1000V$ : 150% Rated Voltage
	1000V $V$ : 120% Rated Voltage

### ◆ Dimension



Unit : mm [inches]

TYPE	L	W	T (max)	B (min)	BW (min)
0603	1.60+/-0.1 [.063+/-0.004]	0.80+/-0.1 [.031+/-0.004]	0.90 [.039]	0.40 [.016]	0.15 [.006]
0805	2.00+/-0.20 [.126+/-0.012]	1.25+/-0.20 [.126+/-0.012]	1.45 [.071]	0.70 [.059]	0.20 [.012]
1206	3.20+/-0.30 [.126+/-0.012]	1.60+/-0.20 [.126+/-0.012]	1.80 [.071]	1.50 [.059]	0.30 [.012]
1210	3.20+/-0.30 [.126+/-0.012]	2.50+/-0.20 [.126+/-0.012]	2.60 [.102]	1.60 [.059]	0.30 [.012]
1808	4.60+/-0.30 [.181+/-0.012]	2.00+/-0.20 [.079+/-0.008]	2.20 [.087]	2.50 [.098]	0.30 [.012]
1812	4.60+/-0.30 [.181+/-0.012]	3.20+/-0.30 [.126+/-0.012]	3.00 [.118]	2.50 [.098]	0.30 [.012]
1825	4.60+/-0.30 [.220+/-0.012]	6.35+/-0.40 [.250+/-0.016]	3.00 [.118]	2.50 [.098]	0.30 [.012]
2220	5.70+/-0.40 [.220+/-0.016]	5.00+/-0.40 [.197+/-0.016]	3.00 [.118]	3.50 [.137]	0.30 [.012]
2225	5.70+/-0.40 [.220+/-0.016]	6.35+/-0.40 [.250+/-0.016]	3.00 [.118]	3.50 [.137]	0.30 [.012]

### ◆ How To Order

C

1210

X

103

K

102

T

X

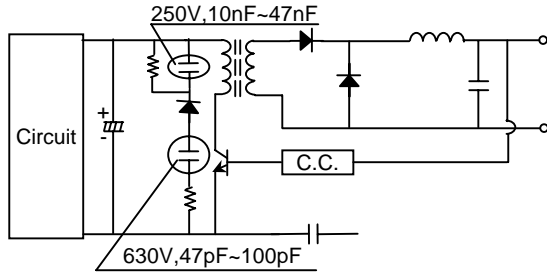
Product Code	Chip Size	Dielectric	Capacitance Unit : pF	Tolerance	Rated Voltage	Packaging	Special Requirement
C: MLCC (Multilayer Ceramic Chip of Capacitor)	Ex.: 1808 : 4.6x2.0mm 1812: 4.6x3.2mm	Ex.: N: NPO X: X7R	Ex.: 2R0:2.0pF 100:10x10 <sup>0</sup> 471:47x10 <sup>1</sup> 102:10x10 <sup>2</sup>	Ex.: C: +/-0.25pF D: +/-0.50pF J : +/- 5% K : +/-10% M: +/-20%	Ex.: 251:250Vdc 102:1000Vdc	T: Taping & Reel B: Bulk	Ex.: O: Arc Prevention X: Cushion Termination

---

◆ **Application** (Typical Circuit)

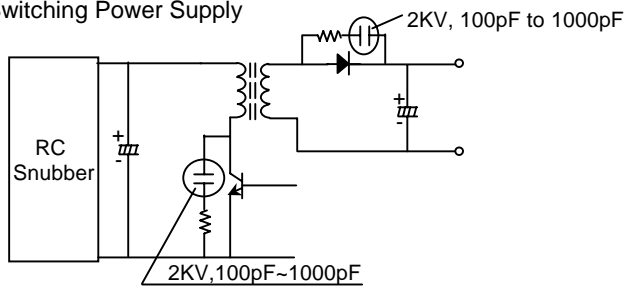
- The voltage rating 200V to 1KV and sizes 0603 to 2225.

DC-DC Converter



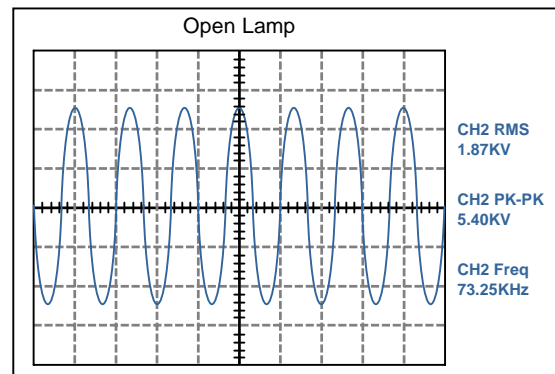
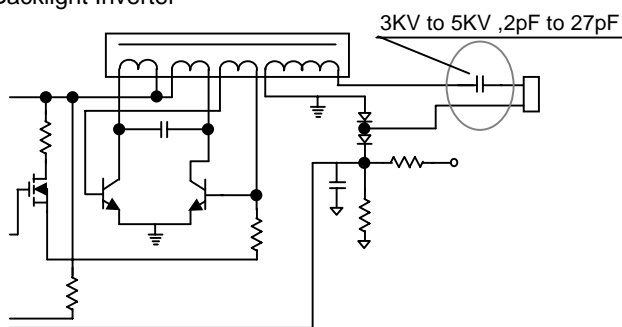
- For IEEE 8023Telecom devices in LAN interface, offering includes COG (NPO) and X7R temperature characteristics with typical voltage rating of 2K in sizes 1206 to 2220.

Switching Power Supply



- LCD back light inverter circuits typically require 3KV - 5KV rated capacitors.

Backlight Inverter



- Other dimensions, capacitance values and voltages rating are available. Please contact HEC.
-